

Extracellular vesicle DNA:

A promising cancer biomarker

Lung cancer patients could one day receive faster, cheaper and more accurate diagnoses thanks to extracellular vesicle DNA found in liquid biopsies. These were the findings of a research team led by Professors Kye Young Lee and Jae Young Hur of Konkuk University's School of Medicine. Their work offers an alternative to invasive tissue biopsies which are currently used to detect cancer and determine treatments.

Lung cancer is the biggest tumour-related killer worldwide, accounting for 1.6 million deaths per year. Currently, doctors rely on biopsies – invasive procedures that involve taking tissue samples to determine the presence and extent of disease – to diagnose cancers and define the best course of treatment. In fact, patients are increasingly having multiple biopsies during treatment as doctors try to prevent or detect cancers' resistance to targeted drugs and immunotherapies.

However, while demand for biopsies increases, the chances of obtaining adequate tissue samples in later stages decreases, as patients become more susceptible to infection and other diseases, preventing them from having the procedure. Furthermore, the asymptomatic nature of lung cancer

and lack of efficient diagnostic methods means the disease can often reach its later stages before a patient sees a doctor for their first biopsy, leading to poor prognosis.

As a result, researchers have turned to liquid biopsies, such as blood tests, to detect cancerous DNA. The more efficient and less invasive nature of these tests mean that cancers can be detected with minimal risk to the patient and – once optimised – could even become a routine measure to help doctors detect cancers sooner and improve patient outcomes.

However, finding enough cancerous DNA in blood to achieve truly efficient and accurate testing is challenging. Initially, researchers focused on circulating tumour DNA (ctDNA), however, there is only a very small amount of ctDNA in the

blood, making it difficult to detect. And while some studies have shown relatively high rates of detection – or sensitivity – ranging from 66% to 78%, others have only achieved sensitivities ranging from 28.8% to 46%, rendering it unsuitable for diagnostic use.

Now, a team of researchers led by Professors Kye Young Lee and Jae Young Hur at Konkuk University's School of Medicine are looking to extracellular vesicle DNA (EV DNA) for faster, cheaper and more accurate and reliable cancer diagnosis.

WHAT ARE EXTRACELLULAR VESICLES?

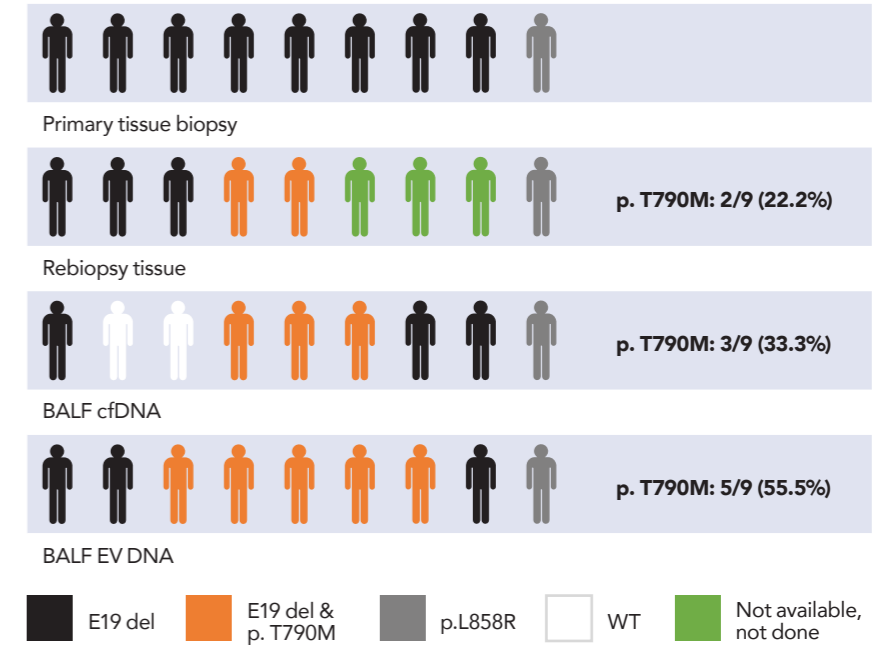
Extracellular vesicles (EVs) are nanoparticles that are secreted by cells into body fluids such as blood, urine or saliva. They contain bioactive molecules including DNA, RNA, proteins and lipids (fats).

Fortunately for researchers, doctors and patients, cancer cells secrete more EVs than healthy cells, making them – and the cancerous DNA – more abundant in body fluids. This, combined with the protection EVs offer DNA from degradation, make EV DNA easier to detect and a better target than cell-free DNA (cfDNA).

TESTING IN NON-SMALL CELL LUNG CANCER PATIENTS

To see if EV DNA lived up to its promise, Professors Lee and Hur decided to explore it in non-small cell lung cancer (NSCLC) patients, which account for 85% of lung cancer cases. Here, EVs were obtained through liquid biopsies of blood plasma and bronchoalveolar lavage fluid (BALF). (A bronchoalveolar lavage is a saline wash of the bronchial and alveolar spaces in the lungs, where saline displaces the EVs and any other extracellular material and the resulting mixture is sucked up for examination. A bronchoscopy is done at the same

EGFR genotyping results



The first lane shows primary tumour tissue biopsy results. Second to fourth lane compares the tissue re-biopsy results of resistance acquired patients with liquid biopsy using BALF cfDNA and BALF EV DNA. (Abbreviations; E19 del: exon 19 deletion, WT: wild type.)

time using a fibre optic cable so that pulmonologists and surgeons can see any diseased tissue.)

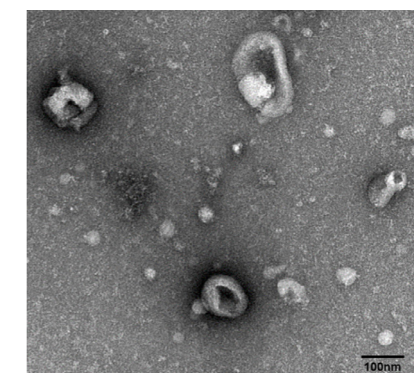
Once isolated, the EVs were broken up and the cancerous DNA retrieved for sequencing. In particular, the researchers wanted to check that the sequences of the epidermal growth factor receptor gene (EGFR) found in plasma and BALF EV DNA matched those found in existing tissue samples. They chose the EGFR gene because its encoded protein helps control cell growth, division and survival and mutations in the gene have been associated with lung cancer.

The hope was that the three sample types would be in complete agreement for each patient and show that liquid biopsies could definitively replace solid tissue biopsies.

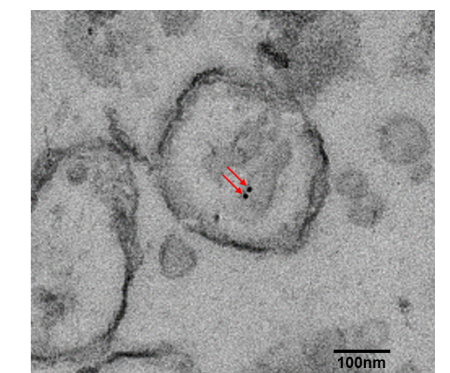
They found that BALF liquid biopsies could. In fact, EGFR sequences in 23 BALF EV DNA samples matched 100% of those obtained from tissue biopsies from the same patients. In contrast, cfDNA EGFR sequences only matched 71.4% of those from tissue biopsies.

Meanwhile, EGFR sequences from 20 blood plasma EV DNA samples matched

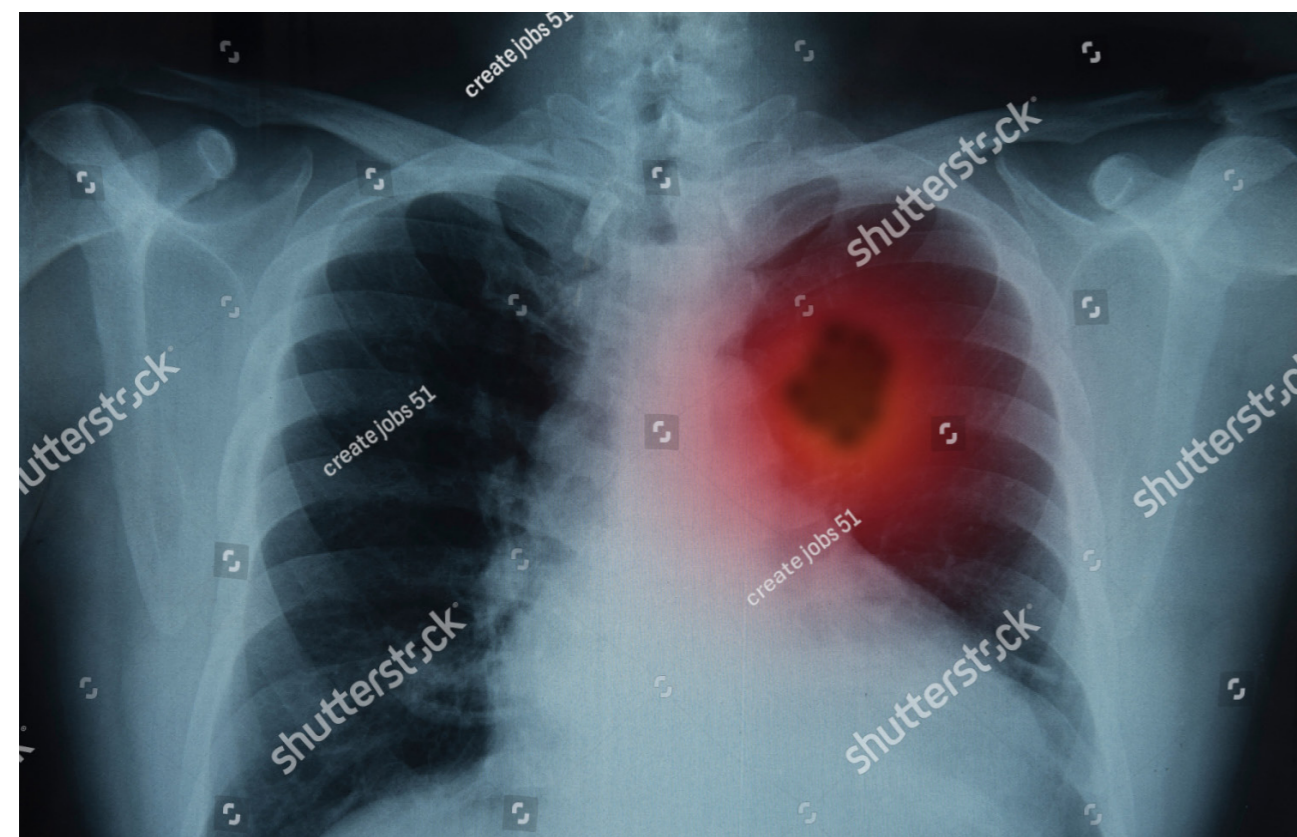
Lung cancer is the biggest tumour-related killer worldwide, accounting for 1.6 million deaths per year.



Electron microscope image of EVs in BALF sample.



The red arrow indicates double stranded DNA (dsDNA) inside of an EV collected from BALF. DsDNA specific antibodies were used to performing immuno-EM.



55% of sequences from corresponding tissue biopsies. While this is significantly lower than the BALF results, it is still higher than those achieved with plasma cfDNA, which only matched 30% of EGFR sequences in corresponding tissue biopsies.

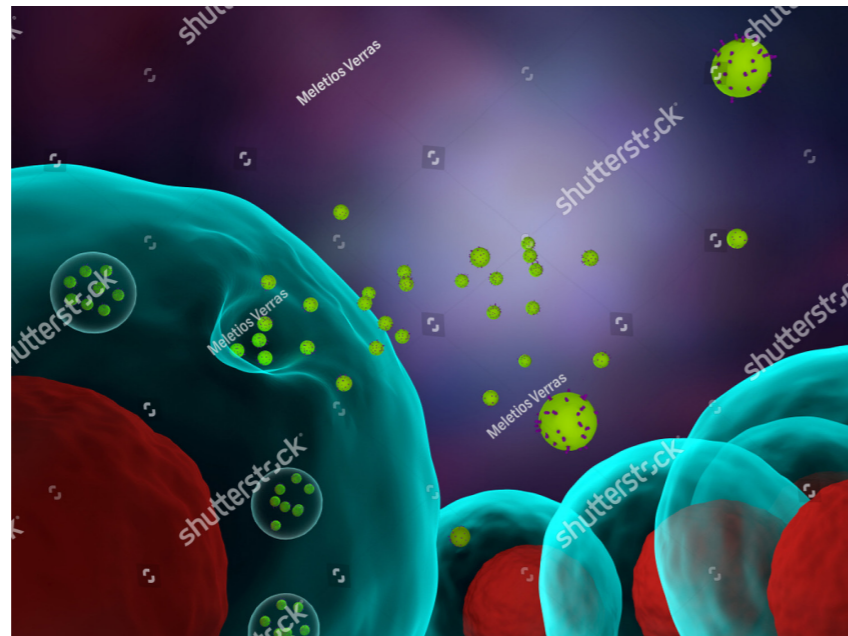
Professor Lee and his team chalk plasma EV DNA's reduced sensitivity down to sample contamination. In their 2018 paper, they explain that lipoproteins present in the plasma are very similar to those of EVs, preventing them from completely isolating EVs and interfering with analysis.

They also suggest that distance could play a role in a sample's ability to demonstrate cancer status, where BALF EV DNA's close proximity to the lung cancer helped it to better display tumour status than circulating EVs and DNA.

DETECTING ACQUIRED DRUG RESISTANCE

With such remarkable results, Professors Lee and Hur wanted to see whether BALF EV DNA could also be used to detect acquired drug resistance.

Often, EGFR-tyrosine kinase inhibitors (TKIs) – anticancer drugs that prevent an enzyme called tyrosine kinase from transmitting signals that result in cell



Lung cancer patients could one day receive faster, cheaper and more accurate diagnoses thanks to extracellular vesicle DNA found in liquid biopsies.

growth and division, and thus, prohibit further growth or spread of cancer - can be used to successfully treat NSCLC patients.

However, after about a year of use, patients with EGFR mutations such as Exon 19 deletion and p. L858 R often acquires resistance to EGFR-TKIs and need alternative treatments.

To ensure the next set of treatments will be effective, doctors need to confirm that patients have the mechanism of resistance caused by a mutation in p. T790 M.

As a result, the researchers surveyed biopsies from nine patients with acquired resistance to EGFR-TKIs for the p. T790 M mutation. Of these, six were tested using BALF EV DNA and cfDNA obtained from liquid biopsies as well as a conventional tissue biopsy. The remaining three patients only had the BALF EV DNA and cfDNA samples as tissue samples were unattainable for various reasons.

Here, BALF EV DNA revealed that five of the nine patients had the p. T790 M mutation while cfDNA only detected

it in three out of nine patients. However, these tests are still more sensitive than tissue biopsies which only exposed the mutation in two patients – including two from the BALF EV DNA and cfDNA test.

Furthermore, two of the patients newly identified as pT790M carriers by liquid biopsy showed positive responses to the subsequent Osimertinib, a third-generation TKI designed to target the pT790M mutation.

THE FUTURE

Despite the small sample size, these early findings demonstrate BALF EV DNA's increased sensitivity to the p.T790M mutation, compared to tissue biopsies which are normally used to detect this mutation. One day, BALF EV DNA tests could help doctors optimise treatment plans sooner and significantly improve patient prognosis.

Finally, while further studies into EV DNA is needed to confirm their ability to detect other cancers and mutations, Professors Lee and Hur believe that their research could lead to the identification of new biomarkers and help the advancement of precision medicine.

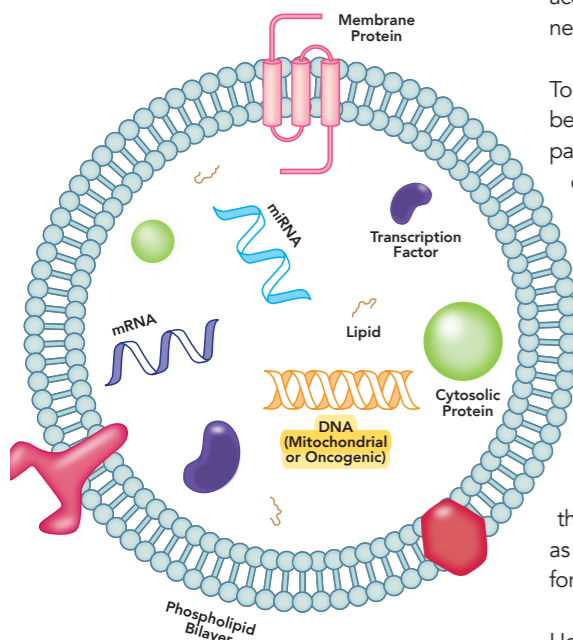
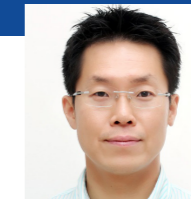


Diagram of tumour-derived EV containing RNA; DNA, including mutant DNA; and proteins.

Behind the Research



Professor Kye Young Lee



Professor Jae Young Hur

E: 20050690@kuh.ac.kr E: 20160475@kuh.ac.kr T: +82 2 2030 7521 W: www.kuh.ac.kr/medical/dept/centerDoctor.do?dept_cd=100011

Detail

Konkuk University Medical Center
Gwangjingu neungdongro 120-1
Seoul, Korea 05030



Bio

Kye Young Lee MD PhD is a Pulmonologist and chief of Precision Medicine Lung Cancer Center at Konkuk University Medical Center. He received his MD and PhD from Seoul National University Medical School. Jae Young Hur PhD runs the Liquid Biopsy lab in the Department of Pathology and Precision Medicine Lung Cancer Center at Konkuk University Medical Center. He received his PhD from Seoul National University.

Funding

AstraZeneca Korea Ltd

Collaborators

- Hee Joung Kim at Konkuk University Medical Center
- Chang-Min Choi at Asan Medical Center
- Jae Cheol Lee at Asan Medical Center
- Min Kyo Jung at Korea Brain Research Institute
- Wan Seup Kim at Konkuk University Medical Center

Personal Response

How long do you think it will take before liquid biopsies overtake tissue biopsies in cancer diagnosis and treatment?

At present, liquid biopsy requires advanced technology not widely available in hospitals and medical labs. Most of the liquid biopsies are performed with blood, as it is the most conveniently drawn and frequently tested body fluid. However, because of its complex composition, results are often inconclusive or complicated. Therefore, liquid biopsy technique should be able to reduce cost, solve the problem of interpreting complicated results, and explore other bodily fluids to widen the use for cancer diagnosis. Discovery of a new technique and then application into the actual field often take years and years, but liquid biopsy technique seems to have reached the level applicable to undiagnosed patients. There are currently lots of excitement in the field of liquid biopsy, which we are sure would lead to further research and advancement in the early detection and treatments of cancer patients.

Research Objectives

Professors Kye Young Lee's and Jae Young Hur's research team's focus on studying and developing cancer detection methods using liquid biopsy with extracellular vesicles.

References

Hartmaan, J., Haap, M., Kopp, H. and Lipp, H. (2009). Tyrosine kinase inhibitors - a review on pharmacology, metabolism and side effects. *Current Drug Metabolism*, [online] 10(5), 470-481. Available at: www.ncbi.nlm.nih.gov/pubmed/19689244 [Accessed 20/01/2019].

Hur, J., Kim, H., Lee, J., Choi, C., et al. (2018) Extracellular vesicle-derived DNA for performing EGFR genotyping of NSCLC patients. *Molecular Cancer*, [online] 17(1), 15-20. Available at: www.ncbi.nlm.nih.gov/pubmed/29374476 [Accessed 20/01/2019].

Jiang, T., Su, C., Ren, S., C., F., et al. (2018) A consensus on the role of osimertinib in non-small cell lung cancer from the AME Lung Cancer Collaborative Group. *Journal of Thoracic Disease*, [online] 10(7), 3909-3921. Available at: www.ncbi.nlm.nih.gov/pmc/articles/PMC6106007/ [Accessed 20/01/2019].

Lee, J., Hur, J., Kim, I., Choi, C., et al. (2018). Liquid biopsy using the supernatant of a pleural effusion for EGFR genotyping in pulmonary adenocarcinoma patients: a comparison between cell-free DNA and extracellular vesicle-derived DNA. *BMC Cancer*, [online] 18, 1236-1243. Available at: bmccancer.biomedcentral.com/articles/10.1186/s12885-018-5138-3 [Accessed 20/01/2019].

Paul, M. and M, A. (2004). Tyrosine kinase - Role and significance in cancer. *International Journal of Medical Sciences*, [online] 1(2), 101-15. Available at: www.ncbi.nlm.nih.gov/pmc/articles/PMC1074718/ [Accessed 20/01/2019].

Radha, S., Afroz, T., Prasad, S. and Ravindra, N. (2014). Diagnostic utility of bronchoalveolar lavage. *Journal of Cytology*, [online] 31(3), 136-138. Available at: www.ncbi.nlm.nih.gov/pmc/articles/PMC4274523/ [Accessed 20/01/2019].

Reck, M. and Rabe, K. (2017). Precision Diagnosis and Treatment for Advanced Non-Small-Cell Lung Cancer. *The New England Journal of Medicine*, [online] 377, 849-861. Available at: www.nejm.org/doi/full/10.1056/NEJMra1703413 [Accessed on 20/01/2019].

US National Department of Health Services. (2019). EGFR Gene. [online] Genetics Home Reference. Available at: <https://ghr.nlm.nih.gov/gene/EGFR#resources> [Accessed 20/01/2019].

Williams, E. Amino acid single letter code. [online] UW Hematology. Available at: <http://williams.medicine.wisc.edu/aminoacidcodes.pdf> [Accessed 20/01/2019].